

GEOLOGY

BIO-1101

ROCKS COLLECTION

A comprehensive collection of igneous, metamorphic and sedimentary rocks, in wooden box, 375x300x400mm, with partitioned tray containing 50 specimens, each nominally 40x30mm, numbered and packed in transparent plastic bag. Specimens may be removed from bags for detailed examination. Each specimen is labelled also on the box lid provides the geological name.



BIO-1102

BIO-1102

ROCKS COLLECTION

Same as BIO-502 but in wooden glass show case 450x300x40mm.

BIO-1103

MINERAL COLLECTION

A quality collection of minerals, in wooden box, 375x300x40mm, with partitioned tray containing 30 specimens may be removed from bags for detailed examination. Each specimen is labeled also on the box lid provides the geological name.



BIO-1104

BIO-1104

MINERAL COLLECTION

Same as BIO-504, but in wooden glass show case. 450x300x40mm.

BIO-1105

ROCKS AND MINERALS COLLECTION

A different collection of rocks and minerals, in wooden box, 375x300x40mm, with partitioned tray containing 50 specimens each nominally 40x30mm, numbered and packed in transparent plastic bag. Specimens may be removed from bags for detailed examination. Each specimen is labeled also on the box lid provides the geological name.

BIO-1106

SOIL THERMOMETER

Range 0 to 60°C. Comprises aluminium tube, perforated at base, approximately 300x12mm, with removable red spirit filled thermometer.

BIO-1107

PLANT PRESS

Plants are pressed between a pair of metal frames 430x280mm, with integrally formed handles. Pressure is applied by two webbing straps.



BIO-1108

BIO-1108

INSECT NET

Very beautiful collapsible design, light weight, convenient to carry in bag. Fine synthetic mounted on wire ring. Gripped to handle by fly-nut removable rod and hand grip.

BIO-1108.1

Ring dia 250mm

BIO-1108.2

Ring dia 200mm.

BIO-1109

PLANKTON NET

Made of silk bolting net 875mm, net suspended by muslin reinforcement. There braided lead attached to swivel front. Rear of bag with 50mm opening for glass vial collection of plankton with 2 graduated collecting tubes 50ml. Capacity.

BIO-1109.1

Ring dia 250mm.

BIO-1109.2

Ring dia 300mm.

BIO-1109.3

Ring dia 375mm.



BIO-1109

BIO-1110

AQUATIC NET

Strongly built for sweeping up aquatic insets and as general utility aquatic net. Removable, rigid, D shaped frame 300mm across silk bolting mesh bag with the reinforced with metal ferrule and with a strong grip.

BIO-1111

VASCULUM

An oval shape metal case. Painted outside and blackened inside to prevent rusting with hinged door and sliding catch with shoulder strip.





BIO-1112

BIO-1112

SPECIMEN TUBES Specimen tubes transparent with poly screw cap.

	Height	Diameter
BIO-1112.1	50	25mm
BIO-1112.2	75	25mm
BIO-1112.3	100	25mm
BIO-1112.4	75	32mm
BIO-1112.5	100	32mm
BIO-1112.6	75	37mm
BIO-1112.7	100	37mm



BIO-1114

BIO-1113

PETRI DISHES BOROSILICATE GLASS With melted edges of borosilicate glass

	Dia, mm
BIO-1113.1	75
BIO-1113.2	90
BIO-1113.3	100
BIO-1113.4	125
BIO-1113.5	150
BIO-1113.6	200

BIO-1114

PETRI DISH (DISPOSABLE) PLASTIC

Transparent, ready-to-use disposable Petri Dishes are sterilized by radiation. Individually packed in a Polybag. Size 90mm.

MICROSCOPE ACCESSORIES

BIO-1115

OBJECTIVES

Achromatic interchangeable and parafocaled. Dry type except X100 which is an oil immersion.

	Mag.	N.A.
BIO-1115.1	x4 or x5	0.10
BIO-1115.2	x10	0.25
BIO-1115.3	x20	0.40
BIO-1115.5	x100	1.3 S. L.

BIO-1116

EYE PIECES

BIO-1116.1	x5 H
BIO-1116.2	x10 H
BIO-1116.3	x10 WF
BIO-1116.4	x15 H

BIO-1117

POINTER EYE PIECES

With movable pointer for indicating details of a specification.

BIO-1117.1	x5 H
BIO-1117.2	x10 H
BIO-1117.3	x15 H

BIO-1118

REFLECTOR

50mm dia plano and plano-concave optically true mirrors.

BIO-1119

CONDENSER

An abbe condenser set combined with an adjustable Iris Diaphragm. It is recommended for use with high magnification objectives, i.e. up to X100. This unit has a Numerical aperture of 1.2

BIO-1120

MECHANICAL STAGE

Attachable to any standard microscope stage by means of 2 clamp jaws set at 90° to each other. Graduated movements are adjusted by rack and pinion mechanism and have vernier scales. Movement ranges graduated 40 to 115mm x 1.0mm and 0 to 45mm x 1.0mm. Vernier reads to 0.1mm.

BIO-1121



BIO-1120



BIO-1122

MICROSCOPE LAMP
Sub stage illuminator which fits in place of mirror. Mirror is removed by loosening retaining grub screw. The light passes through a blue filter. With bulb for 220-240 a.c. supplied or 12V 15W bulb if so desired.

BIO-1123

MICROSCOPE LAMP ON STAND

Invaluable for microphotography of dark field work. With removable condenser and iris diaphragm and filters blue and white light controlled by continuously variable transformer. On stand for 220-240V a.c. supplies.

BIO-1123

DOUBLE DEMONSTRATION EYE PIECE

This instrument is comprising of a beam splitting Prism to optical Glass, which ensured perfect vision to the teacher and the student. A pointer covers the entire field, being visible to both the viewers, enables easier demonstration. It is rotatable through 360° and is held in the desired viewing position by a knurled headed pinch screw. Supplied in velvet lined case.

BIO-1124

CAMERA LUCIDA (Mirror Type)

The instrument is a revised simplified of tracing the image of the microscopic object on plain paper. It is consisting of a beam Splitting prism optical glass positioned over the eye piece of the microscope, with a large size mirror swinging near the extension arm, which causes the image of the object to appear as if superimposed upon the plain surface, so that drawings can be traced there upon. can be adjusted on any microscope & Supplied in velvet lined case.

BIO-1125

CAMERA LUCIDA (Prism Type)

This instrument is a simplified version of tracing the image of microscopic object on the plane paper. Both the object and the paper is simultaneously visible to the observer for drawing of the focused specimen under the microscope. It fits on the eye piece tube of all standard microscope. Supplied in velvet lined case.

MICROTOMES

BIO-1126

HAND MICROTOME

A useful tool for cutting thin sections for microscopic examination. Its action is based on a differential screw which moves the table and the specimen fixed to it by 0.01mm for each graduation on the screw drum. One complete from Brass with chemical blackened graduated drum.

Dimensions 65mm diameter x 75mm.

Supplied complete with stiff, single edged razor blade.

BIO-1127

HAND MICROTOME WITH TABLE CLAMP

Designed for cutting paraffin embedded specimens in varying thickness upto 50 microns, in increments of 5 microns. Complete with polished wooden case & Table clamp, 4 Microscopic Slides, 1 pack razor Blades

BIO-1128

AUTOMATIC KNIFE SHARPNER

With Millers assembly at its heart, the unit is unmatched even by the most skilled hand honing and stropping. It permits to set exact angle of bevel of knife edge. A perfect cutting edge is obtained by sharpening the knife on this unit. Salient features of the unit include easy operation, automatic reversing of knife at regular intervals for an equal bevel angle on both sides of its edge eliminates the need for resurfacing the glass plate as the knife execution is across the full diameter of the rotating plate. The unit comprises of the reinforced sheet metal housing with hinged doors at front and side to facilitate easy cleaning and maintenance. It has a constant speed motor to rotate the ground glass plate 500 mm dia x 12 mm thick at constant speed. Knife upto the size of 300 mm x 13 mm can be easily sharpened on the unit. A lubricant reservoir needed for grinding and polishing a supported on top frame. The unit complete in all respects and duly painted.

Supplied with cord and plug without micro abrasive suitable to work on 220 V, single phase 50 Hz. A.C. supply.



BIO-1129

ROCKING MICROTOME

Ideal for student use and routine work. For cutting paraffin embedded specimens of comparatively soft tissue. It will cut long ribbons of sections from specimens not exceeding 20mm diameter and, using wood blocks, sections of specimens up to 18x25mm may be cut. The thickness of the sections may be varied between 2 and 24 micron. With simple object holder, knife and honing stone.

BIO-1130

PRECISION ROTARY MICROTOME

It is of immense use for Medical Institutions, Research Laboratories etc. and gives very good results for cutting thin sections. It is mounted on a heavy cast iron base to ensure rigidity and long life. The housing gives maximum protection to the mechanism against dust and paraffin waste etc. It is driven by handle which can be locked in position. The cutting section obtained by mechanically operated crank can be adjusted in steps of 1u to 25u by means of a knurled knob on the front of the instrument. The efficient ball and socket lamp renders it possible to interchange specimen clamp and paraffin stage with a single motion. The knife work is equipped with a rotating knife, hanging plate, three object holders and oil can.

TECHNICAL FEATURES

Feed adjustment	1-25 micron (in step of micron)
Opening of object stage	30x15mm
Overall height	260mm

ACCESSORIES:

- * Razor 120mm - 1 No.
- * Oil Can - 1 No.
- * Honing Stone - 1 No.
- * Dust Cover - 1 No.
- * Object holder (set of 3) - 1 Set
- * Operating manual.

BIO-1131

ADVANCE PRECISION ROTARY MICROTOME

A heavy base with hinged cover for protecting the interior mechanism, and knife holder. With every complete revolution on the drive wheel, the feed panel engaged the teeth of ratchet wheel which advances the object holder through cone and inclined plane mechanism tissue sections can be cut down to even 1 micron. A safety device automatically disengages the feed mechanism. Feed indicator is in front and feed setting is on back of microtome which sets 1 to 50 micron.

A razor 120mm made from heat treated steel and tested for Micro structure is supplied with instrument. There is an arrangement to tilt angle of the razor adjustable upto 30° on a reference scale.

TECHNICAL FEATURES

Feed adjustment	1-50 micron (in step of micron)
Total feed excursion	28mm opening of object clamp.
Ball and flange type	30x15mm

ACCESSORIES:

- * Razor 120mm - 1 No.
- * Oil Can - 1 No.
- * Honing Stone - 1 No.
- * Dust Cover - 1 No.
- * Object holder (set of 3) - 1 Set
- * Operating manual.

BIO-1132

FREEZING MICROTOME**SPECIFICATION**

Freezing stage	: 35mm Dia
Total excursion of feed	: 25mm
Feed Range	: 5-40 microns in 5 microns each
Combination	:
Freezing microtome	: One
Microtome Razor 120mm	: One
Handle for above knife	: One
Knife back for Honing	: One
CO2 Freezing Attachment	:

Complete with Freezing Stage : One

Spanner for connecting freezing

attachment to CO2 cylinder : One

Lubricating Oil Can : One

The microtome is packed in a study wooden box with arrangement for packing the various accessories.

BIO-1133

PARAFFIN EMBEDDING BATH

Suitable for most routine preparations.

Maximum temperature 100°C ± 0.2°C.

A stainless steel bath is mounted in rust-inhibited steel outer case. A stainless cover recessed into the bath catches split wax. The cover has eleven holes, six to accommodate plated copper pots approx. 63mm diameter x 63mm deep, one for a pot 120mm diameter x 110mm deep for wax storage and four for tubes 25mm dia x 50mm deep for small specimens. Overall dimensions 500x300x200mm. The bath is uniformly heated by a 500 W sheathed immersion element controlled by a direct reading thermostat to within 0.2°C. The thermostat is mounted in separate compartment at one end of the bath together with a main switch and indicator lamp. For 220-240 a.c. supplies.

BIO-1134

THERMOSTATIC WATER BATH (Constant Temp.)

Constant temperature Water Bath is fabricated of stainless steel sheet chamber and body made of mild steel sheet. Two full view glass windows are provided for viewing objects while in operation. Heating is done by means of tubular type heaters fitted on top of the bath. An electric operated stirrer fitted with stainless steel shaft and blades is provided to maintain uniform temp. Temperature is controlled from 5°C above ambient temperature.

Specification

Temp Range	: Room Temp. to 100°C Sen. ±5°C
Rating	: 1.5KV 220 volts, Cycles 50
Stirrer	: Motor, 4000 RPM, 0-6amp.
Dimensions	:
Outer dia	: L-26", B-15", H-13" Made of M.S. Sheet
inner dia	: L-15½", B-12", H-11" made of S.S. Sheet

STAINING

BIO-1135

MICROSCOPIC GLASS SLIDES

Manufactured from the superior quality of glass sheet optically flat highly resistance to corrosion having ground and polished edges. Dimensions variation of the slides +0.2mm in thickness 1mm in length and width

		Size	Thickness
BIO-1135.1	Popular	75x25	2mm
BIO-1135.2	A-One	75x25	1.35mm
BIO-1135.3	Special	75x25	1.25mm
BIO-1135.4	Deluxe	75x25	1.15mm
BIO-1135.5	Super Deluxe	75x25	0.9-1mm
BIO-1135.6	Frosted	75x25	1.35mm

BIO-1136

COVER GLASSES (ROUND)

Cover glasses, correct thickness for most microscope optics. Resistance glass, 0.13 to 0.16mm thick. Pack of 10gms

	Dia (mm)
BIO-1136.1	18
BIO-1136.2	19
BIO-1136.3	22
BIO-1136.4	24

BIO-1137

COVER GLASSES (RECTANGULAR)

Cover glasses, correct thickness for most microscope optics. Resistance glass, 0.13 to 0.16mm thick. Pack of 10gms

	Size (mm)
BIO-1137.1	22x30
BIO-1137.2	22x40
BIO-1137.3	22x50
BIO-1137.4	24x40



BIO-1137.4 24x50
BIO-1137.5 24x60

BIO-1138

COVER GLASSES (SQUARE)

Cover glasses, correct thickness for most microscope optics.
Resistance glass, 0.13 to 0.16mm thick. Pack of 10gms

	Size (mm)
BIO-1138.1	18X18
BIO-1138.2	19X19
BIO-1138.3	22X22
BIO-1138.4	24X24

BIO-1139

STAINING JAR

Glass jar, with moulded glass cover, Takes 10 slides 76x26mm back to back..

BIO-1140

STAINING TROUGH

Glass trough with moulded glass cover.

BIO-1141

STAINING BOTTLE STAND

Polished hardwood, for twelve 30ml dropping bottles.

BIO-1142

COUPLIN JAR

High density polythene body : capacity upto 10 standard 25 to 75mm slides, back to back, Grooved to hold slides in erect position with domed and shallow thread screw cap.

BIO-1143

CAVITY BLOCKS

Block form with cavity, complete with cover glass

BIO-544.1	60x60mm
BIO-544.2	40x40mm

BIO-1144

SLIDE DISPENSER

Holds upto 70 slides, 76x26mm length x width stacked inside the clear acrylic cover. Slides are dispensed by turning the knob at either side.

BIO-1145

BOTTLE, CANADA BALSAM

With drop on cap and glass. Capacity 30cm³.

BIO-1145

SLIDE DRYING PLATE

To reduce setting time of permanent and semi permanent microslide preparations and for warming photographic developing dishes. An electrically warmed flat plate with thermostatically controlled surface temperature. Enameled steel to resist stains and corrosive reagents.

SPECIFICATIONS

Temperature range 25° to 50°C.

Rating 225 watt & Supplied complete with 1.5m 3 core mains cable for use on 220-250V a.c. supplies.

BIO-1146

SLIDE BOXES

Wooden with hinged lid. Slides are held in numbered slots and there is an index inside the lid.

BIO-1146.1	Capacity 100 slides.
BIO-1146.2	Capacity 50 slides.
BIO-1146.3	Capacity 25 slides.

BIO-1147

SLIDE BOX (High Impact Polythene)

Insect proof, sturdy, slide box provides the ultimate protection to the Microscope slides. This is moulded in high impact polythene. The base has numbered grooves for placing 25x175mm slides and the top portion has an index card quick identification.

	Capacity
BIO-1147.1	25
BIO-1147.2	50
BIO-1147.3	100
BIO-1148	

MICROSCOPE SLIDE FOLDER

Top hold 20 slides. Wooden with file type hinged and frame with 20 compartments of die cut hardboard serially numbered with velvet cushioned bottom. Nicely polished.

BIO-1149

MICROSCOPE SLIDE TRAY ALUMINIUM

Aluminium, to hold 20 slides flat. Die pressed anodized aluminium sheet, can be used in oven for drying the slides.

BIO-1150

MICROSCOPE SLIDE CABINET

The cabinet is clad in laminated sheet. Dust proof door with lock. The draws are made in wooden having wood groves each serially numbered, bottom lined with velvet, provided with index card frame and puller knobs. Lever lock to prevent drawer taken accidentally. An extra drawer with index cards. Moisture proof lacquered finish.

	Cap.	Drawers	Slides
BIO-1150.1	500	5	100
BIO-1150.2	1000	10	100
BIO-1150.3	2000	10	200
BIO-1150.4	5000	25	200
BIO-1150.5	10000	50	200
BIO-1150.6	15000	60	250

BIO-1151

MICROSCOPE SLIDE CABINET

A unique combination of storing the slides in flat as well as vertical position. Clad in laminated sheet. Disappearing type lockable door. One half fitted with aluminium trays of 20 slides each in flat position. The other half carries drawer to hold slides in vertical position, all serially numbered. With index card frame and puller knobs. Extra drawer with index cards, lacquer finish.

	Cap.	Flat.	Vertical
BIO-1151.1	1000	400	600
BIO-1151.2	1600	600	1000
BIO-1151.3	2000	800	1200

BIO-1152

INSECT SETTING BOXES

Seasoned wooden frame with finger joint and plywood bottom The bottom have 5/6mm papered corksheets for pinning. Fumigation Chamber perforated for pesticide. Lacquer finish.

	Sizes:
BIO-1152.1	450x300x75mm
BIO-1152.2	375x250x75mm
BIO-1152.3	300x225x75mm

BLG-1153

INSECT SETTING SHOW CASES

Seasoned wooden frame with finger joints. Plywood bottom. Non rattling glass in wooden frame top. Bottom has thick papered cork sheet for pinning. Double walled to provide fumigation chambers perforated for pesticide provided with two brass clips and index card frame. Moisture proof lacquer finish.

	Sizes:
BIO-1153.1	600x450x75mm
BIO-1153.2	450x300x62mm
BIO-1153.3	375x250x62mm
BIO-1153.4	300x225x62mm

BIO-1154

ANIMAL CAGE POLYCARBONATE

Same features as above but the cage is moulded in super tough crystal clear poly-carbonate.

	Sizes:
BIO-1154.1	430x270x150mm
BIO-1154.2	290x220x140mm

BIO-1155



INSECT SPREADING BOARD

Made of wooden covered with 5mm thick papered cork sheet. The groove from 0 to 12mm is smoothly adjustable, die pressed adjustment chrome plated brass fittings. Nicely polished.
Size : 350 x 112mm. Length x width.

BIO-1156

CORNEX DISSECTING MICROSCOPE

A robust traditional microscope constructed from a solid block of wood. The sides are out away at a convenient angle to form hand rests. A glass stage is provided, illuminated from underneath by a mirror set at 45°. The lenses are carried on an arm which can be swung across the stage plate so that objects at different positions can be examined.
The two lenses supplied enable magnification of X10 and X20 to be obtained.
Stage 80x50mm Length x width.

BIO-1157

FLEXIBLE ARM MAGNIFIER

General purpose magnifier consisting of a large bio-convex lens mounted on a flexible arm. The heavy base provides stability whilst the flexible arm and swivel lens mount allow the lens to be used in any position or plane.

Dimensions :

Lens focal length 250mm
Lens diameter 100mm
Magnification x2 approx.
Arm length 300mm

BIO-1158

TRIPOD MAGNIFIER

With adjustable focussing, very useful for elementary, biological work because of its large view field, dia 40mm.

Magnification:

BIO-1158.1 x4
BIO-1158.2 x5
BIO-1158.3 x6

BIO-1159

TRIPOD MAGNIFIER

A twin lens magnifier comprising a large frame mounted lens supported on a tripod fitted with a small lens mounted on a swinging arm. Three powers of magnification are available. Overall height 118mm. Mainframe diameter 95mm, diameter of lens 100mm, 24mm. Overall width 180mm.

BIO-1160

ILLUMINATED MAGNIFIER

A large circular lens and fluorescent tube mounted on a spring loaded adjustable arm that can be set at any position or angle desired, giving optimum illumination and magnification of the working area. The lens mounting and shade are of robust moulded aluminium and the arms of heavy gauge steel with tempers steel springs. An on/off push switch is mounted on the shade and the ballast transformer is interposed in the mains lead. The magnifier is supplied without mounting base or lamp which are listed below and must be chosen and purchased methods of use.

Dimensions Lens diameter 100mm, Magnification x1.75 approx.

Overall Arm, length 850mm approx.

Mains lead 1.5m from magnifier to ballast transformer. For use on 220 to 240 V mains, power consumption 22W.

BIO-1161

MAGNIFIERS, POCKET

Multiple lenses mounted in folding plastic case. Subject is viewed using one or more lens to produce required magnification. Clear diameter of lens 22mm.

	No. of Lenses	Magnification
BIO-1161.1	1	x4
BIO-1161.2	2	x7
BIO-1161.3	3	x10

BIO-1162

**POCKET MAGNIFIER**

Consisting of a pair of plano convex lenses mounted in a Bakelite body in such a way that the distortion at the edge of the field is reduced to minimum. Lens mount folds into case.
Clear diameter of the lenses 19mm approx. Magnification X10

BIO-1163

HAND VIEWER

Twin lens system mounted in a metal holder, x10 Magnification.
Lens diameter 25mm, metal handle 50mm.

BIO-1164

WATCHMAKER'S EYEGLASS

Plastic lens, diameter 25mm, mounted in plastic/aluminium eye grip frame. Magnification x3.5 focal length 75mm.

BIO-1165

MAGNIFIERS

In beautiful unbreakable plastic frame with handle.

	Lens Dia
BIO-1165.1	40mm
BIO-1165.2	50mm
BIO-1165.3	60mm
BIO-1165.4	75mm

BIO-1166

MAGNIFIERS, METAL HANDLE

Brass frame and iron handle duly bright chrome plated, packed in card board boxes.

	Lens dia	Focal length	Magnification
BIO-1166.1	40mm	100mm	X3.5
BIO-1166.2	50mm	150mm	X2.5
BIO-1166.3	63mm	200mm	X2.25
BIO-1166.4	63mm	150mm	X2.5
BIO-1166.5	75mm	200mm	X2.25
BIO-1166.6	75mm	150mm	X2.5
BIO-1166.7	87mm	200mm	X2.25
BIO-1166.8	100mm	200mm	X2.25
BIO-1166.9	100mm	150mm	X2.5
BIO-1166.10	113mm	300mm	X1.83
BIO-1166.11	125mm	300mm	X1.83
BIO-1166.12	150mm	300mm	X1.83

BIO-1167

MAGNIFIERS, BAKELITE HANDLE

Brass frame with Bakelite handle frame bright chrome plated, packed in card board boxes.

	Lens dia	Focal length	Magnification
BIO-1167.1	50mm	100mm	X3.5
BIO-1167.2	63mm	200mm	X2.25
BIO-1167.3	63mm	150mm	X2.5
BIO-1167.4	75mm	200mm	X2.25
BIO-1167.5	75mm	150mm	X2.5
BIO-1167.6	87mm	200mm	X2.25
BIO-1167.7	100mm	200mm	X2.25
BIO-1167.8	100mm	150mm	X2.5

BIO-1168

DISSECTING SET 20 INSTRUMENTS

Biological instruments set consisting of 20 instruments for accurate Dissection. The instruments housed in a velvet lined wooden box.

BIO-1169

DISSECTING SET 14 INSTRUMENTS

Biological instruments set consisting of 14 instruments housed in a storage case.

BIO-1170



DISSECTING SET

Stainless steel in plastic case consisting of : Dissecting needle pointed with metal handle
Dissecting needle lancet diameter shaped with metal handle. Scalpel rounded metal handle.
Scalpel with removable blades. Scissor curved fine pointed. Scissor straight fine point.
Pipette with rubber bulb length 100mm. Tweezers straight pointed. Tweezers curved pointed.

BIO-1171

FORCEPS, POINTED ENDS

Stainless Steel

	Lens
BIO-1171.1	110mm
BIO-1171.2	130mm

BIO-1172

FORCEPS, BLUNT ENDS

Stainless Steel

	Lens
BIO-1172.1	110mm
BIO-1172.2	130mm

BIO-1173

FORCEPS, CURVED

Stainless steel, fine pointed curved ends.
Length 110mm.

BIO-1174

ARTERY FORCEPS

Stainless steel, mosquito, screw joint straight.
Length 120mm.

BIO-1175

SCALPELS

Stainless steel, handle length 110mm.

	Blade Length
BIO-1175.1	38mm
BIO-1175.2	45mm
BIO-1175.3	50mm

BIO-1176

SCALPEL HANDLES

Strong stainless steel handles slotted to accept blades.

BIO-1176.1	No. 3 length 95mm
BIO-1176.2	No. 4 length 100mm.

BIO-1177

SCALPEL HANDLES

Polystyrene, autoclavable handles slotted to accept blades.

BIO-1178

SCALPEL BLADES

Surgical quality steel blades for use with above handles.
Supplied in metal foil.

	Blade Length		Blade Length
BIO-1178.1	10	BIO-580.2	10a
BIO-1178.2	11	BIO-580.4	12
BIO-1178.3	15	BIO-580.6	20

BIO-1179

DISSECTING SCISSORS, FINE POINTS

Stainless steel, open shank.

	Blade
BIO-1179.1	110mm
BIO-1179.2	150mm

BIO-1180

DISSECTING SCISSORS, FINE POINTS

Very fine points for delicate work, closed shanks, stainless steel. Overall length 100mm.

BIO-1181

DISSECTING SCISSORS, BLUNT ENDS

Stainless steel, closed shanks. Overall length 110mm.

BIO-1182

DISSECTING SCISSORS, CURVED

Fine points, open shanks, stainless steel. Overall length 110mm.

BIO-1183

NEEDLE, PLASTIC HANDLE

Needle Mounted in 100mm plastic handle.

BIO-1184

DISSECTING BOARDS

Made of Selected soft wood . Pin can be easily pressed with the help of hand only. The frame edge with the help of hand only. The frame edge 17mm deep with linseed oil protection.

BIO-1184.1	450x300mm Length x Width.
BIO-1184.2	550x400mm Length x Width.

BIO-1185

DISSECTING DISHES, ALUMINIUM

Made from aluminium sheet. Rectangular, with flanged edges. Complete with wax. Bottom, Length x Width x Depth.

	Size
BIO-1185.1	250x200x60mm
BIO-1185.2	300x250x75mm

BIO-1186

DISSECTING DISHES, ENAMELLED

Steel, white enameled inside and outside rectangular with flanged edge. Complete with wax. The dish bottom size 300x250mm length x width and height 65mm.

PLANT PHYSIOLOGY

BIO-1187

GANONG POTOMETER

Comprises a graduated narrow bore, horizontal glass measuring tube with a vessel for a plant shoot at one end having a vertical limb with a stopcock and a funnel fitted by a ground glass joint. Mounted on a stand.

BIO-1188

CLINOSTAT

To run 30 hours in vertical or horizontal position and to carry weights, with clock movement based on heavy metal stand.

AQUARIUM

BIO-1189

AQUARIUM

Aquarium having glass panels firmly sealed with Fibre Top Cover.. Supplied with Air Pump, Assorted Toys and Net. Available in four sizes

BIO-1189.1	Size: 30"x12"x15"
BIO-1189.2	Size: 24"x12"x15"
BIO-1189.3	Size: 18"x12"x12"
BIO-1189.4	Size: 18"x9"x9"

ANATOMICAL MODELS

BIO-1190

HUMAN TORSO WITH HEAD

Full size, 12 parts, without sterno-abdominal wall but with ribs, sternum and clavicle with their attachments. Thoracic and abdominal organs, individually detachable lungs, stomach, liver, intestine, heart, which is further sectioned in two parts. Brain can be taken out, exposing the interior of the skull. Sectioned head and neck depicts internal organs of the region, sexless, on base with key card.

BIO-1191

HUMAN TORSO WITH HEAD

Same as BIO-593, but in 7 parts

BIO-1192

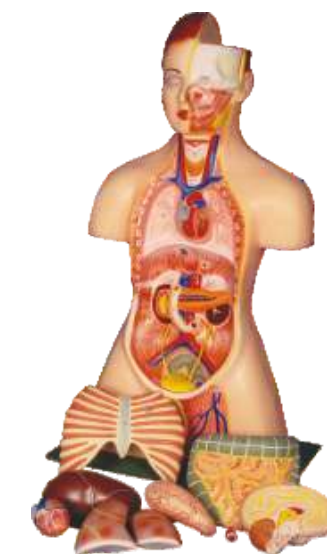
HUMAN TORSO WITHOUT HEAD

Full size, 8 parts, shows all the major anatomical details. Visceral organs are individually detachable to expose the body cavity. Lungs, heart, liver, stomach and intestine are removable. Heart, lung and kidney are sectioned to show internal details, sexless, on base, with key card.

BIO-1193

HUMAN TORSO (18 PARTS)

Natural size, 85 cm height, unisex , open head, open back, separated into 18 parts, with the shoulder joint open for observation. The following organs can be removable: brain(1),





eyeball(1), lung(2), heart(2), liver(1), pancreas and duodenum(1), stomach (2), kidney(1), intestine(1), cover of caecum(1), bladder(1), cervical vertebrae (1), thoracic vertebrae(1), lumbar vertebrae(1), torso(1). The head of torso shows the skull and brain exposed on one side. This model of torso is perfect for study of human digestive system, circulatory system, part of the nerve system and urinary system. Mounted on a plastic base, length approx. 550 mm, width approx. 400mm. made of unbreakable high quality PVC, hand painted with non-toxic colors in a scientifically correct manner. It is supplied with detailed instruction cards and conforms to the main EU safety standards and is CE marked.

BIO-1194

HUMAN TORSO, WITH HEAD, HALF SIZE

Youth model, approx. 600 mm. in height, dissectable into 6 parts. The brain is fixed in skull and can be seen after removing the skull cap. Lungs, liver, stomach and intestine are removable to show the internal structure. On base with key card.

BIO-1195

HUMAN TORSO WITHOUT HEAD, HALF SIZE

Same as BIO-597 but without head. Dissectable into 6 parts, on base, with key card.

BIO-1196

HUMAN MALE REPRODUCTIVE SYSTEM

(Section through Male Pelvis) showing all the important reproductive organs, clearly numbered and may be identified with the attached key card. Mounted on board.

BIO-1197

HUMAN FEMALE REPRODUCTIVE SYSTEM

(Section through Female Pelvis) a very carefully prepared model showing all important reproductive organs numbered clearly. Mounted on board with key card.

BIO-1198

HUMAN HEAD AND BRAIN

Life size. The brain is dissectable in 2 parts, can be taken out, showing the cranial nerves and important parts of the skull, on base, with key card.

BIO-1199

HUMAN HEAD AND NECK, L.S.

Made of unbreakable high quality PVC, hand painted with non-toxic colors in a scientifically correct manner. Mounted on a plastic base, length approx. 330mm, width approx. 230 mm, thickness approx. 70 mm. It shows teeth section and median section part of cervical vertebrae modeled three-dimensionally. The organs in head are pointed by the appropriate colors and shown as sections. It is supplied with detailed instruction cards and conforms to the main EU safety standards.

BIO-1200

HUMAN BRAIN, 4 PART

A life size detailed 4 part sectioned model. The right hemisphere has the cerebellum and the stem with occipital lobe. On base, with key card.

BIO-1201

HUMAN BRAIN, 2 PART

Natural size. Made of unbreakable high quality PVC and hand painted with non-toxic colors in a scientifically correct manner. Separates into 2 parts, median section. Mounted on a plastic base, length approx. 200 mm, width approx. 165 mm, thickness approx. 150 mm. It is supplied with detailed instruction cards and conforms to the main EU safety standards

BIO-1202

HUMAN NOSE, L.S.

Enlarged 2 times, demonstrating clearly crossing of the windpipe and esophagus, on board, with key card.

BIO-1203

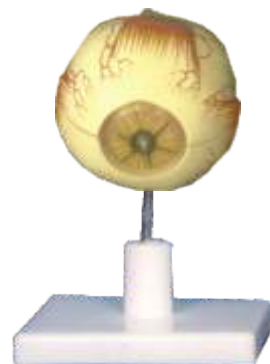
HUMAN EYE, 5 TIMES ENLARGED

An highly improved and enlarged model showing fine details in three dimensional relief. Cut in horizontal plane and separable in seven parts. After removing the upper half of the sclera (outer shell), the choroid with its verticose veins is exposed, with the removal of second shell, details of the retina come into view and the position of the yellow and blind spots is quite visible. All important anatomical features such as muscle insertions, optic nerve, blood vessels, ciliary body cornea, crystalline lens, and iris etc. are clearly numbered and are identifiable. Mounted on base, with key card.

BIO-1204

HUMAN EYE, 3 TIMES ENLARGED

Eye model, separated into 6 parts, 3 times enlarged. Made of unbreakable high quality PVC and hand painted with non-toxic colors in a scientifically correct manner. Removable parts include:



Upper half of the sclera with cornea and eye muscle attachments, Choroids with iris and retina, Lens, Vitreous humor. Mounted on a plastic baseboard, length approx. 330 mm, width approx. 230 mm, thickness approx. 280 mm. It is supplied with detailed instruction cards and conforms to the main EU safety standards

BIO-1205

HUMAN EYE WITH LID

Same as BIO-607, but with lid.

BIO-1206

HUMAN EYE IN BONY ORBIT

A 3 times enlarged model of the eye, with 9 parts, in bony orbit. The upper half of eye ball is removable and dissects into 6 parts, showing all anatomical details. Out of six muscles controlling the eye ball two are removable. On base, with key card.

BIO-1207

EYE MODEL ON BONY BASE

A 5 times enlarged model of the eye, sectioned horizontally, dissects into 6 parts, the upper half of the sclerotic membrane, two choroid membranes, retina with vitreous humour, lens and lower half of the sclerotic membrane. On base, with key card.

BIO-1208

HUMAN EAR, ENLARGED, 2 PARTS

Enlarged 4 to 5 times, Shows outer, middle and inner ear. Removable auditory ossicles and labyrinth with cochlea and vestibulocochlear nerve. On base, with key card.

SMC-1209

HUMAN EAR, 3 PARTS

Enlarged approx. 3 times. Made of unbreakable high quality PVC and hand painted with non-toxic colors in a scientifically correct manner. Tympanic membrane with malleus and labyrinth with stapes can be removed. Separated into 3 parts. Mounted on a plastic base, with explanation, length approx. 330 mm, width approx. 230 mm, thickness approx. 210 mm. It is supplied with detailed instruction cards and conforms to the main EU safety standards

BIO-1210

HUMAN EAR, 6 PARTS

Four times enlarged, dissectable into 6 parts. Shows outer, middle and inner ear. Removable tympanic membrane with malleus and incus as well as labyrinth with stapes, cochlea and vestibulocochlear nerve (2 part), with two removable bone sections to close the middle and inner ear. On board, with key card.

BIO-1211

HUMAN TOOTH, MOLAR

Molar tooth dissects into 2 parts, showing internal structure, on stand, with key card.

BIO-1212

HUMAN TOOTH, UPPER TRIPLE ROOT

Upper triple root molar with caries, enlarged 15 times in 2 parts, longitudinal section through crown, 2 roots and pulp cavity, on stand with key card.

BIO-1213

HUMAN TOOTH, UPPER TRIPLE ROOT

Same as BIO-615 but dissectable in six parts. With removable pulp and three tooth inserts with different stages of advanced caries. On stand, with key card.

BIO-1214

HUMAN UPPER AND LOWER JAW

3 times enlarged to show the tooth roots, spongiosa, vessels and nerves, on stand, with key card.

BIO-1215

HUMAN UPPER AND LOWER JAW

Showing various positions of teeth in the upper and lower jaws. Internal wall is removed to show the incisors, permanent canine and permanent premolars, molars, milk canine, milk premolars, permanent incisors in full view and also the arteries, veins and nerves serving them, on base with key card.

BIO-1216

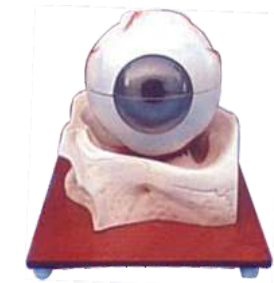
HUMAN LOWER JAW WITH TEETH

Enlarged, internal wall is removed to show the incisors, milk canine, milk premolars, molars, permanent canine and permanent premolars in full view, as also the arteries, veins and nerves serving them, on a large size board, with key card.

BIO-1217

HUMAN TEETH WITH TONGUE

Enlarged model, dissectable in 2 parts, with detachable teeth of lower jaw, on base, with key card.





BIO-1218

LARYNX, 2 PARTS

Natural size, 2 parts, shows larynx, wind pipe, ligaments, muscles and thyroid gland, one half is removable, on base with key card.

BIO-1219

LARYNX, 3 PARTS

Same as BIO-621 but dissectable into 3 parts.

BIO-1220

HUMAN LARYNX WITH TONGUE

Natural size three parts.

Larynx showing cartilages, ligaments, muscles, relief of mucous membrane and thyroid gland. Tongue showing front part of the lower jaw which is detachable and separates into two parts, median section, sublingual gland and submandibular gland are shown. On base, with key card.

BIO-1221

HUMAN LUNG, RIGHT

Dissectable into 2 parts showing all the important details, on base, with key card.



BIO-1222

HUMAN HEART AND LUNGS

Full size, 7 parts, shows 2 part removable larynx, wind pipe with bronchial tree, 2 part removable heart, subclavian artery and vein, venacava aorta, pulmonary artery, esophagus, 2 lungs with front halves removable, and diaphragm, on base, with key card.

BIO-1223

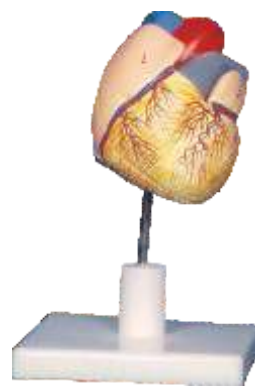
HUMAN HEART WITH LUNGS & LARYNX

An enlarged model, showing detailed structure, mounted on base, with key card.

BIO-1224

HUMAN HEART EXTRA LARGE

Extra large size and highly detailed model carefully coloured and finished. The Heart is cut into 2 parts by a vertical line towards the level of the ventricular septum and separates into 2 parts after the arch of aorta and superior venacava have been removed. Both auricles and ventricles with the bicuspid and tricuspid semilunar valves as well as the sigmoid valves can be seen. Separate in 4 parts. On base with diaphragm and outline of the pericardium, with key card.



BIO-1225

HUMAN HEART

Three times enlarged, dissectable into 4 parts, showing clearly both ventricles and atria open to expose the valves. The chief blood vessels and musculature of heart are shown, on base with key card.

BIO-1226

HUMAN HEART

Three times enlarged, dissectable into 3 parts, sectioned through the ventricles and auricles. The bicuspid and tricuspid semilunar and sigmoid valves are shown, on stand with key card.

BIO-1227

HUMAN HEART

Three times enlarged, dissectable in two parts, on Stand

BIO-1228

HUMAN YOUTH HEART

Natural size, the front heart wall is removable to view the chambers on stand, with key card.

BIO-1229

HUMAN STOMACH

Showing external details, large size, mounted on stand, with key card.

BIO-1230

HUMAN LIVER WITH GALL BLADDER

Natural size, showing the four lobes of the liver, peritoneum, gall bladder and vessels, on stand, with key card.

BIO-1231

HUMAN SECTION OF SKIN ENLARGED 70 TIMES

Made of unbreakable high quality PVC and hand painted with non-toxic colors in a scientifically correct manner. It shows the scalp with hair in different planes of section. All the parts are painted with appropriate colors and are shown as width section. Mounted on a plastic base, length approx. 420 mm, width approx. 300 mm, thickness approx. 230 mm. enlarged 70 times. It is supplied with detailed instruction cards and conforms to the main EU safety standards



BIO-1232

HUMAN CIRCULATORY SYSTEM

Made of unbreakable high quality PVC and hand painted with non-toxic colors in a scientifically correct manner. This 1/2 life-size relief model shows : The arterial venous system Heart, Lung, Liver, Spleen, Kidneys, Partial skeleton. Mounted on plastic baseboard, length approx. 900 mm, width approx. 320 mm, thickness approx. 70 mm. It is supplied with detailed instruction cards and conforms to the main EU safety standards

BIO-1233

HUMAN DIGESTIVE SYSTEM

natural size, separated into 2 parts

Made of unbreakable high quality PVC and hand painted with non-toxic colors in a scientifically correct manner. Life size model which demonstrates the entire digestive system in graphic relief.

Features : Nose, Mouth cavity and pharynx, Esophagus, GI tract, Liver with gall bladder, Pancreas, Spleen The duodenum, cecum and rectum are opened. Mounted on plastic baseboard, length approx. 900 mm, width approx. 320 mm, thickness approx. 120 mm. It is supplied with detailed instruction cards mounted on the board and conforms to the main EU safety standards



BIO-1234

HUMAN RESPIRATORY SYSTEM

Human respiratory system, 3/4 natural size, separated into 7 parts. Made of unbreakable high quality PVC and hand painted with non-toxic colors in a scientifically correct manner. The first class model contains the following parts : 2- part pharynx, Trachea with bronchial tree, 2-part heart, Subclavian artery and vein Vena cava, Aorta, Pulmonary artery, Esophagus, 2-part lung, Diaphragm. Mounted on plastic baseboard, length approx. 420 mm, width approx. 300 mm, thickness approx. 140 mm. It is supplied with detailed instruction cards mounted on the board and conforms to the main EU safety standards



BIO-1235

NEURON

Enlarged approx 2500 times, showing structure with separate modulated nerve fibre as seen under electron microscope, on board, with key card.

BIO-1236

HUMAN SPINAL CORD

With nerve branches, 10 times enlarged, on base, with key card.

BIO-1237

HUMAN NERVOUS SYSTEM

Showing brain and details of spinal cord and the nerves in their natural position in the body, mounted on board, with key card.



BIO-1238

HUMAN KIDNEY L.S.

Made of unbreakable high quality PVC. Kidney enlarged 3 times high quality painted with non-toxic colors. Seen from behind, pyramids of the kidney with their papillae entering the open pelvis. Schematic representation of a nephron with its loop of Henle on a board in one piece. On a board, length approx. 330 mm, width approx. 230 mm, thickness approx. 70 mm. It is supplied with detailed instruction cards and conforms to the main EU safety standards

BIO-1239

KIDNEY SECTION NEPHRONS BLOOD VESSELS AND RENAL CORPUSCLE

Set of three models on one board. Kidney section, 3 times full size. Nephrons and blood vessels 120 times full size showing a section through renal cortex and medulla. Malpighian corpuscle of kidney, 700 times enlarged showing an opened Malpighian corpuscle with glomerules and Bowman's capsule. On base, with key card.



BIO-1240

KIDNEY WITH BLADDER

Natural size kidney, ureters, adrenal glands and bladder with prostate as well as the large abdominal right kidney sectioned to show all anatomical details. Mounted on base.

BIO-1241

HUMAN URINARY ORGANS

Natural size, made of unbreakable high quality PVC and hand painted with non-toxic colors in a scientifically correct manner. The right kidney, the bladder and the prostate are opened. In one piece. Mounted on plastic baseboard, length approx. 420 mm, width approx. 300 mm, thickness approx. 50 mm. It is supplied with detailed instruction cards and conforms to the main EU safety standards

BIO-1242

MUSCLE FIGURE





About 1/10th natural size, showing the topography of muscles in one piece, on base with key card.

BIO-1243

HUMAN FEMALE PELVIS, 2 PART

Median section. One half of female genital organs with bladder and rectum is removable, the other half is shown at normal position in the female pelvis. On board, with key card.

BIO-1244

HUMAN MALE PELVIS

Median section. One half of male genital organs with bladder and rectum is removable, the other half is shown at the normal position in the male pelvis. On board, with key card.

BIO-1245

PREGNANCY PELVIS WITH BABY

Showing a median section through female pelvis in 9th month of pregnancy with a removable foetus to study normal position of child before birth. On base, with key card.



BIO-1246

EMBRYONIC DEVELOPMENT (PERIOD OF GESTATION)

A set of nine detailed models, mounted on stands, showing the following stages :-

1. An embryo about 6 days old, considerably enlarged.
2. Uterus with the embryo in 1st month of gestation,
3. Uterus with the embryo in 3rd month of gestation.
4. Uterus with foetus in 4th month.
5. Uterus with foetus, placenta and umbilical cord.
6. Uterus with foetus in 5th month
7. Uterus with foetus in 7th month of pregnancy.
8. Uterus with foetus in 8th month of pregnancy.
9. Uterus with foetus in 9th month of pregnancy, complete with key card.

BIO-1247

HUMAN SKULL

2 part model basic version for demonstration in schools.

BIO-1248

HUMAN SKULL

3 parts model, for anatomical study.

BIO-1249

HUMAN SKELETON

Natural size. The height of the skeleton, mounted on a stand approx. 550 X 550 mm is approx. 1700 mm. Human skeleton, male, with pelvic mounted roller stand. Height and dimensions are those of a natural man. The limbs are easily removable. Hands and feet are fully articulated and detachable. Three-part articulated skull, complete with individually spaced and molded teeth. 5th cervical vertebrae

5 times enlarged part mounted on a plastic baseboard, length approx. 420 mm, width approx. 300 mm, thickness approx. 140 mm. The model is made of unbreakable high quality PVC manufactured by a high tech roto-moulding machine and hand painted with non-toxic colors in a scientifically correct manner. They are supplied with detailed instruction cards and conforms to the main EU safety standards

Spongy bone

Compact bone showing harvas and 4 different bone structures mounted on baseboard. Mounted on a plastic base, length approx. 530mm, width approx. 380 mm, thickness approx. 100 mm. The models are made of unbreakable high quality PVC, hand painted with non-toxic colors in a scientifically correct manner. They are supplied with detailed instruction cards and conforms to the main EU safety standards

BIO-1250

HUMAN SKELETON (FIBRE)

Full size model Made of Fibre, with skull dissectable in three parts articulated.

BIO-1251

STAND FOR HUMAN SKELETON

Stand for above base fitted with castor wheels.

BIO-1252

SKELETON MODEL, MINIATURE PLASTIC

A miniature model for school to give general idea of the bones, height 325 mm. approx. Made of Plastic in show case.

BIO-1253

AMOEBAPROTEUS

ZOOLOGICAL MODELS



A true three dimensional model showing detailed structure, mounted on base, with key card.

BIO-1254

AMOEBAPROTEUS 2 PARTS

Enlarged approx. 1000 times. A small pseudopodium which can be opened up showing the structure as under electron microscope magnification. Separates into 2 parts, on base with key card.

BIO-1255

PARAMECIUM

One side of the model clearly shows the oral groove and their continuation into the gullet and the other side shows the details of the internal structure, mounted on base with key card.

BIO-1256

PARAMECIUM 2 PARTS

Enlarged approx. 1600 times shows the cell inventory of protozoa, macro and micronucleus, contractile vacuoles, cytostome with membranelles, myonemes and food vacuoles, formation of the endoplasm and actoplasm & the network of neuronemes. A detailed block shows the structure of the pellicle of the ectoplasm, and position and order of the trichocysts and a range of cilia in typical order. Separates into 2 parts, on stand and base, with key card.

BIO-1257

MODEL OF HYDRA

A longitudinal section showing detailed structure of the body wall, nematocysts, hypostome, mouth, tentacles and gastro vascular cavity. Also showing the testes, ovary and a portion of tentacle in T.S. An accurate and three dimensional model mounted on stand, with key card.

BIO-1258

EARTH WORM DISSECTION

A set of two models showing the external characters in a portion and the dissection in the remaining, exhibiting all important systems. Second model is a cross section through the typhlosolar region of the intestine. A very useful model mounted on board, with key card.

BIO-1259

COCKROACH ANATOMY

A set of two models, one dissectable into two parts, showing the anatomy of cockroach, alimentary canal regions, salivary glands, reproductive organs, nervous system etc. The other model shows the ventral structure with detachable mouth parts, wings and appendages, with key card.

BIO-1260

INSECTS LIFE HISTORY

A set of ten model showing the L.H. of any one of the following insects, mounted on board, with key card.

BIO-662.1

Anopheles Mosquito

BIO-662.2

Culex Mosquito

BIO-662.3

Housefly

BIO-662.4

Honey Bee

BIO-662.5

Butterfly

BIO-662.6

Silkmoth

BIO-1261

MALARIAL PARASITE LIFE HISTORY

Showing the complete rhizogonus and sporogonus cycle in plasmodium vivax. A set of 24 models, mounted on board, with key card.

BIO-1262

ANATOMY OF STARFISH

Showing the general structure, internal viscera, water vascular system and arm in T.S. showing details of tube feet, mounted on board, with key card.

BIO-1263

FISH DISSECTION

Showing the general structure after dissection, mounted on stand, with key card.

BIO-1264

FROG DISSECTION

Showing section of frog and detailed internal structure of a frog. A large model on board, with key card.

BIO-1265

FROG DEVELOPMENT

A set of 24 models showing the various stages of the development of frog, from egg to adult, arranged on a large size board, with key card.

BIO-1266



**EARTHWORM DISSECTION**

Showing the external character in a portion and the dissection in the remaining, exhibiting all important systems, mounted on board.

BIO-1267

BIRD DISSECTION

Natural size, Domestic hen, the right side shows the feathers and the other side all the internal organs, on base with key card.

BIO-1268

DEVELOPMENT OF CHICK

Clearly showing the order and rate of formation of embryonic tissues and organs. It also brings out the close relations of the birds to the reptiles in mode of development and general construction. Complete development from egg to adult, set of 18, mounted on a large size board with key card.

BIO-1269

ANIMAL CELL

Typical, a three dimensional model with one side dissected to show complete internal structures, mounted on base, with key card.

BIO-1270

ANIMAL CELL DIVISION, MITOSIS

A set of 8 models, showing the process of mitosis cell division. The chromosomes are painted for easy identification.

BIO-1271

ANIMAL CELL DIVISION MITOSIS

A set of 10 models, showing resting cell, early prophase, prophase, late prophase, metaphase, late metaphase, anaphase, late anaphase, telophase and daughter cells, all mounted on board, with key board.

BIO-1272

ANIMAL CELL DIVISION, MEIOSIS

A set of 12 models, showing detailed stages in meiotic cell division, realistically coloured to bring out the detailed structures as seen under a microscope. A very useful and instructive model, mounted on board, with key card.

BIO-1272

ANIMAL CELL MODEL (ENLARGED)

Enlarged 20,000 times. Made of unbreakable high quality PVC, hand painted with non-toxic colors in a scientifically correct manner. The model shows all the structures of the animal cell: nucleus, endoplasmic reticulum, Golgi apparatus, centrioles, lysosomes, fat vacuoles. Mounted on a plastic base, length approx. 530 width approx. 380mm, thickness approx. 160mm. It is supplied with detailed instruction cards and conforms to the main EU safety standards. Made of unbreakable high quality PVC, hand painted with non-toxic colors in a scientifically correct manner.

BIO-1273

MODEL OF D.N.A.

(Deoxyribonucleic acid) Model showing segment of D.N.A. molecule mechanism of replication, to show the double helix coiling and reforming, nucleotides and the structural formula to show the molecular shapes and bonds and angles distorted. Completed model arranged on a board, fully labelled.

BIO-1274

MODEL OF R.N.A.

(Ribonucleic acid) Model showing R.N.A. molecule D.N.A. Template molecule of chromosome, role of messenger and transfer R.N.A. colour key and structure formula. The complete model arranged on board, fully labelled.

BOTANICAL MODEL

BIO-1275

TYPICAL FLOWER

Large size model of a typical flower, all parts detachable, ovary with a single ovule inside, on base, with key card.

BIO-1276

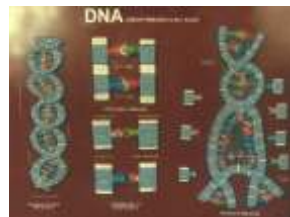
TYPICAL FLOWERS L.S.

A model showing the L.S. of a flower, mounted on board, with key card.

BIO-1277

PLANT CELL

Enlarged many times, showing the microscopic structure, with key card.



BIO-1278

PLANT CELL (ENLARGED)

Enlarged 3000 times. Made of unbreakable high quality PVC, hand painted with non-toxic colors in a scientifically correct manner. Shows, illustrates the microscopic structure. In one piece mounted on a plastic base, length approx. 420, width approx. 300mm, thickness approx. 110mm. It is supplied with detailed instruction cards and conforms to the main EU safety standards

BIO-1279

CHLYMODONUS

A complete set showing internal structure. Zoospore formation and stage in sexual reproduction. An accuracy designed model, mounted on a board, with key card.

BIO-1280

PLANT MITOSIS

A set of 10 models showing all the stages of karyokinesis and cytokinesis from metabolic cell to the formation of two daughter nuclei. All stages are mounted on a board, with key card.

BIO-1281

PLANT CELL DIVISION MEIOSIS

A set of 15 models, newly designed model according to recent concept of chromosome changes from the resting nucleus to the formation of four daughter cells, complete set mounted on board, with key card.

BIO-1282

FERTILISATION OF ANGIOSPERMS

Polygynous type, enlarged 300 times, on board with key card.

BIO-1283

ROOT ANATOMY

This model demonstrates the general arrangement of tissues. Stem is cut transversely, longitudinally, radially and tangentially at different planes to make the structural details very clear and the formation of various tissues easily under standable, mounted on stand, with key card.

BIO-1284

MONOCOT ROOT T.S.

Showing complete internal details of the root of smilax, mounted on board, with key card.

BIO-1285

DICOT ROOT T.S.

Showing complete internal anatomy of the young dicotyledonous root, mounted on board, with key card.

BIO-1286

ROOT TIP OF FERN

The model shows the pointed growth resulting from an apical cell with the cells which branch out spirally from point of vegetation. Root shown in longitudinal and transverse sections, detachable, with crown of the root removable.

BIO-1287

MONOCOT STEM ANATOMY T.S. & L.S.

This model exhibits the various tissues and the scattered closed and collateral vascular bundles in transverse and longitudinal sections in maize. The large pitted vessels, spiral and annular vessels show the cell wall thickenings in L.S. Useful model for teaching anatomy of monocot stem mounted on base, with key card.

BIO-1288

DICOT STEM ANATOMY T.S. & L.S.

This model shows the transverse and longitudinal section of a dicotyledonous stem in which case the cambium ring has been formed but no secondary growth has yet taken place. Useful model for study of epidermis, lenticle, cork layer, cork cambium, cortical parenchyme, starch sheath, medullary rays, phloem, sieve plate, sieve tube, phloem parenchyme and inter fascicular cambium. Xylem, pitted vessels, bordered pitted vessels, annular vessels, spiral vessels, pith etc. Mounted on base, with key card.

BIO-1289

DICOT STEM T.S.

Showing various tissues, vascular bundles in transverse section of a dicot stem of sunflower on board.

BIO-1290

MONOCOT STEM ANATOMY T.S. & L.S.

Exhibits the various tissues and the scattered closed and collateral vascular bundles in



transverse and longitudinal sections in maize. The large pitted vessels, spiral and annular vessels show the anatomy of monocot stem. On base with key card.

BIO-1291

MONOCOT STEM T.S.

Showing various tissues vascular bundles in transverse section of a monocot stem of maize, on board, with key card.

BIO-1292

DICOT PLANT STEM

Cross section of the tissue structure of a garden bean's dicot stem (*Phaseolus vulgaris*), magnified 250 times.

BIO-1293

ISOBILATERAL LEAF

Showing the detail of transverse section of leaf, mounted on board with key-board

BIO-1294

LEAF ANATOMY

3-Dimensional model of leaf showing detailed structure of transverse section and longitudinal section. A large size model on stand, with key card.

BIO-1296BIO-1295

MONOCOT LEAF T.S.

Showing details of internal structure of a typical monocot leaf, mounted on board, with key card.

BIO-1296

DICOT LEAF T.S.

Showing details of typical mesophytic leaf, mounted on board, with key card.

TRANSPARENCY SYSTEM
(A complete teaching program for)

BIO-1297 Animal cell planet cell

BIO-1298 Kind of bacteria morphology

BIO-1299 Section of skin generalized

BIO-1300 Human ear generalized

BIO-1301 Human eye generalized

BIO-1302 Human brain generalized

